

## iBridge A5c PTMP Access Point 4.9–6.4 GHz\*

### INCREASED CAPACITY AT EACH SITE

With integrated high-precision GPS Sync technology, iBridge A5c access points can reuse the same channel, saving scarce spectrum

### FIBER SPEEDS

Client speeds of 500+ Mbps (IP) and access point speeds of 1+ Gbps (IP)

### NOISE RESISTANT

Combat noise with advanced Automatic Gain Control (AGC)

### PUBLIC SAFETY FRIENDLY

Supports Public Safety bands (4.90 GHz)

### EASY SET UP

Simple configuration and management from a smartphone; Quickly install client devices with auto-unlocking and provisioning

### MASSIVE SECTOR CAPACITY

First outdoor 4x4:4 solution leveraging advanced antenna beamforming for superior performance

### WIDE FREQUENCY SUPPORT

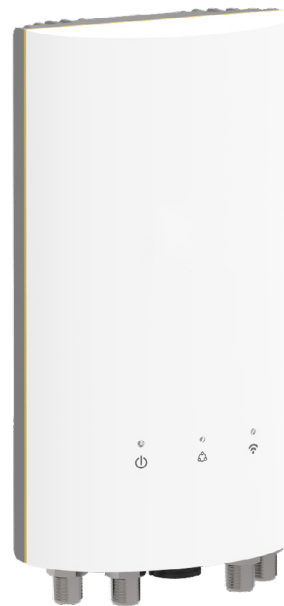
4.90 to 6.20 GHz frequency range in SRS mode where allowed by country regulations

### LONG-RANGE LINKS

Industry-leading performance for mid and long-range multipoint applications

### OUTPUT POWER

30 dBm



### iBridge A5c

With the fastest client speeds and great access point capacity, along with local and network-wide spectrum reuse, the connectorized iBridge A5c delivers the highest possible scale for any unlicensed Fixed Wireless network.

The iBridge A5c is well suited for long range pole and tower multipoint applications, Access Point Collocation (GPS Sync) and Municipal and Rural Licensed Public Safety multipoint (4.9 GHz).

## Performance

- **Max Throughput:** Up to 1.0 Gbps IP (1.7 Gbps PHY)
- **Client Capacity:** 100 Clients
- **Wireless Protocols:** WiFi Interop Spectrum Reuse Synchronization (Airspan proprietary SRS)

## Radio

- **MIMO and Modulation:** 4x4:4 MIMO OFDM up to 256-QAM
- **Bandwidth\*:** 20/40/80 MHz channels  
Tunable in 5 MHz increments for GPS Sync  
Tunable to standard WiFi channels for WiFi Interop
- **Frequency Range:** GPS Sync: 4900–6200 MHz  
WiFi Interop: 5170–5835 MHz  
Restricted by country of operation ('new' US/FCC 5600–5650 support)
- **Max Output Power:** 30 dBm
- **Sensitivity (MCS0):** -87 dBm @ 80 MHz, -90 dBm @ 40 MHz, -93 dBm @ 20 MHz

## Power

- **Max Power Consumption:** 25W
- **System Power Method:** 802.3at compliant
- **PoE Power Supply:** Passive POE compliant, 48-56 V Power over Ethernet supply with IEC61000-4-5 surge protection

## Physical

- **Dimensions:** Height: 300 mm (11.81")  
Width: 151 mm (12.40"), Depth: 85 mm (3.35")
- **Weight:** 1.75 kg (3.86 lbs)
- **Enclosure Characteristics:** Outdoor UV-stabilized engineered polymer with integrated mounting panel
- **Mounting:** Dual pole strap mount and slip on mount for comparable antenna
- **Connector Type:** Female Type N (x4)

\* 4.9 GHz uses 20 MHz channel widths

\*\* Enabled in future software releases

## Environmental

- **Outdoor Ingress Protection Rating:** IP67
- **Operating Temperature:** -40°C to +55°C (-40°F to 131°F)
- **Operating Humidity:** 5 to 100% condensing
- **Operating Altitude:** 4,420 m (14,500') maximum
- **Shock & Vibration:** ETS 300-019-2-4 class 4M5 Features

## Features

- **Gigabit Ethernet:** 10/100/1000-Base-T
- **Multi-User MIMO\*\*:** Device leverages beamforming to transmit to multiple clients simultaneously
- **Synchronization:** GPS+GLONASS allows for network-wide sync and interference avoidance
- **Collocation:** 1PPS GPS Tx/Rx synchronization for same tower collocation and channel reuse
- **Network Processing:** Advanced AP control for capacity and subscriber management
- **Management Services:** Option to use Private or Public Cloud monitoring and management - SNMPv2/v3; Syslog; HTTPS; SFTP; Local HTML 5 based Web UI or optional application for configuration and software upgrade
- **Smart Spectrum Management:** Active scan monitors/ logs ongoing RF interference across channels (no service impact); Dynamic auto-optimization of channel and bandwidth use
- **Security:** WPA2 PSK & Enterprise 802.1x; Radius provisioning, COA, DM; 128-bit AES with hardware acceleration
- **VLANs:** Per subscriber VLAN; Q-in-Q, triple tagging; Management VLAN
- **QoS:** Supports 4 pre-configured QoS levels
- **PS Location:** GNSS1 (GPS + GLONASS)
- **Traffic Shaping:** Per CPE UL/DL commit and maximum rate shaping
- **Access Control List:** Permit, Deny and Remark Layer 2 and Layer 3 traffic flows

## Regulatory + Compliance

- **Approvals:** FCC Part 15.407 and Part 90Y, IC RSS210, CE, ETSI 301 893/302 502
- **RoHS Compliance:** Yes
- **Safety:** UL/EC/EN/ 60950-1 + CSA-22.2
- **WEEE/ROHS Compliance:** Yes

Airspan is an award-winning 4G & 5G small cell access and backhaul solution provider, with over 1000 customers in over 100 countries. Airspan has an expansive product portfolio, which includes indoor and outdoor small cells, and all-outdoor, compact Micro and Macro base stations, a variety of user devices and network optimization solutions ranging from sub-6GHz to millimetre wave.

